

2.0.1.7



by
*SHERLYN
CLARICE
ANDIKA*

FASHION PORTOFOLIO



#1

THE NEV ASCA 2016

FASHION SHOW
A STEP INTO THE FUTURE

by

***SHERLYN
CLARICE
ANDIKA***



THE NEVASCA 2016

FASHION SHOW

A STEP INTO THE FUTURE

Rizka Melina wearing Leia by Sherlyn

A touch of silver half-a-cape on her side sleeve and neck to add futuristic look in this dress. Choosing white satin to give feminine, angelic impression when being worn. Showing a peak of her shoulder and a big slit on the front side of the dress yet the back side is all-covering the legs, to match the angelic impression for the wearer. Invisible zipper on the side plus lining on the inside. Sewn carefully to look invisibly sewn. Carefully designed and made, for comfort and good look.

BY *SHERLYN CLARICE ANDIKA*





BY *SHERLYN CLARICE ANDIKA*



THE NEVASCA 2016

FASHION SHOW
A STEP INTO THE FUTURE

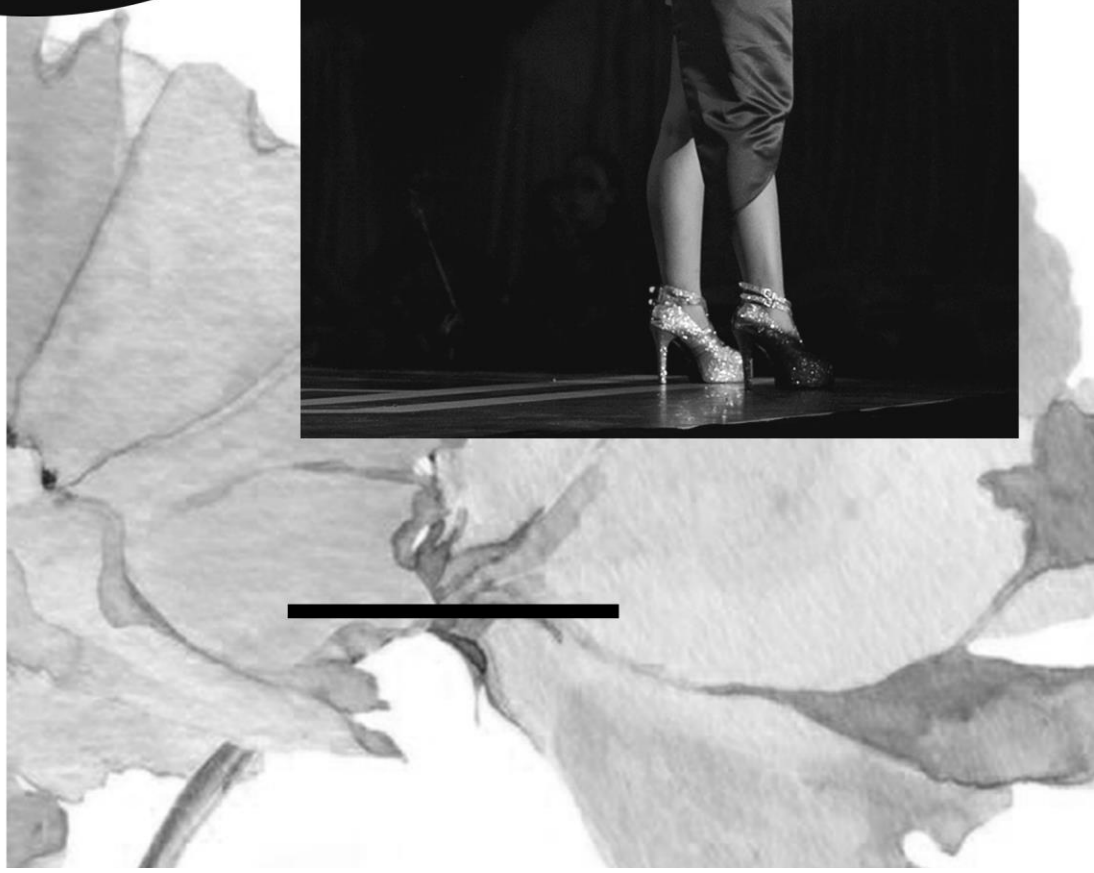
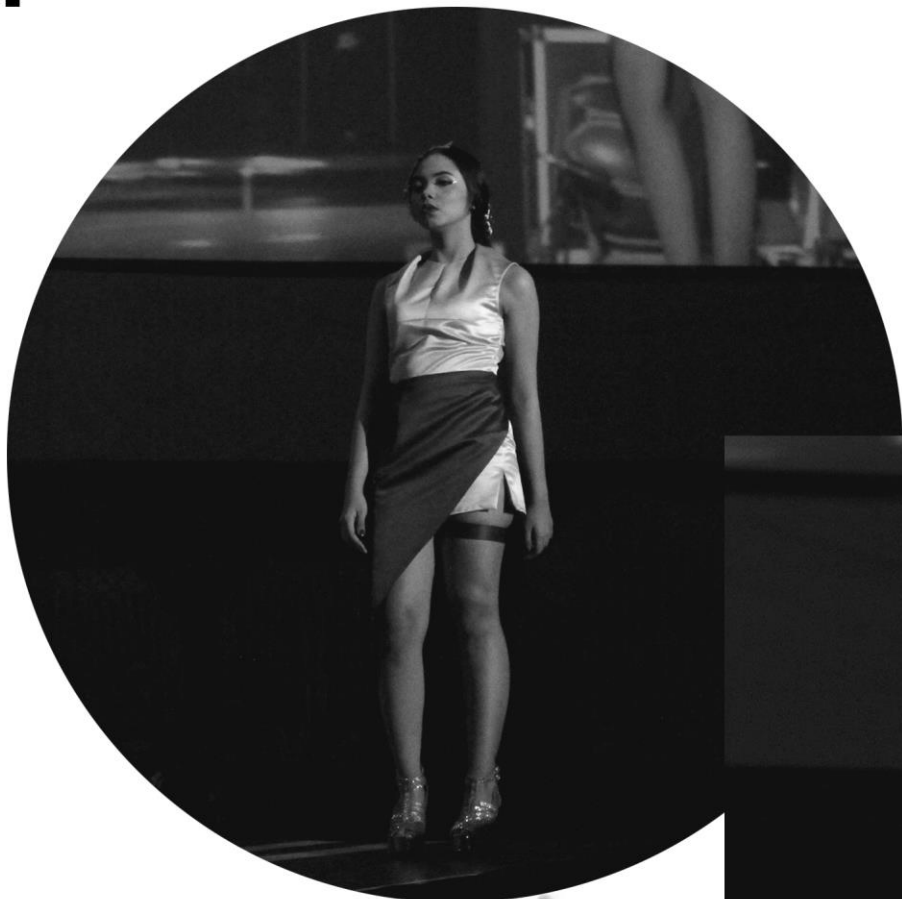
Mura Kankutaraya wearing Keona by Sherlyn

Edgy designed to create an impression of a fierce and bold when being worn, simply minimalist but still has its own details. The cutting pattern on the chest, the folded neck side, the one sided skirt, also there is a bandage-like that suits this set well. Choosing maroon red combined with golden beige colour. Full of little details that matter so much to create an impression of a bold and fierce woman



BY SHERLYN CLARICE ANDIKA

BY *SHERLYN CLARICE ANDIKA*





THE NEVASCA 2016

FASHION SHOW
A STEP INTO THE FUTURE

Sabrina wearing Ava by Sherlyn

A mini dress with unique pattern inspired by the Japanese Pattern Making method. Choosing double sided fabric so the inner side is still looking good because the front side was made shorter than the back side.

Here's a close up detail of how the cut is formed uniquely to attach the top and the bottom side.

BY *SHERLYN CLARICE ANDIKA*



BY SHERLYN CLARICE ANDIKA

BY SHERLYN CLARICE ANDIKA



THE NEVASCA 2016

FASHION SHOW
A STEP INTO THE FUTURE

Rini wearing Betha by Sherlyn

Jumpsuit with braided front side and a touch of semi mini skirt start from each side of the waist and goes behind it. A unique cut to make braided front side top combined with pants made in one piece. A playful formal suit. Simply detailed.



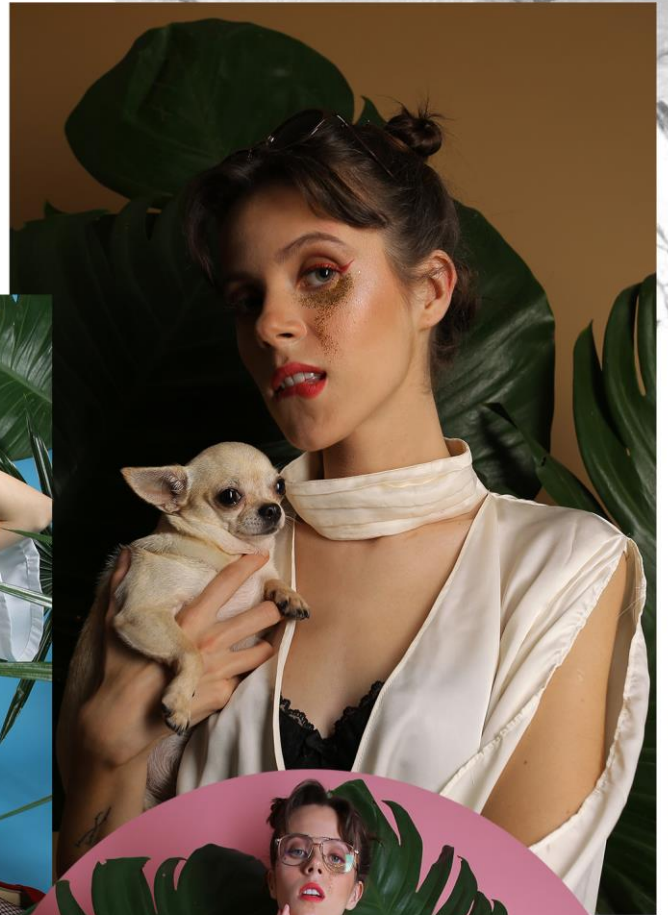
#2

S.CLARS

S . C L A R S is a ready-to-wear label based in Indonesia. Passionately designed and made by S.CLARS team, with well-chosen fabric, we're creating an effortlessly fierce look yet still comfortably worn by the wearer.

BY SHERLYN CLARICE ANDIKA

S . C L A R S 's seasonal collection always has its own story. We're converting each of our inspiration and mood into a piece of artwork or clothes, as people name it. S.CLARS creates its own trend. We don't go with the trend, again, we're creating our own, based on our moods and inspirations



TEMERITY

the quality of being confident and unafraid of danger or punishment especially in a way that seems rude or foolish.

Temerity, because it was the first season ever that S.CLARS has launched

COLLECTION



THE NETTIES

Nettie Top in Kale Green and Tangerine Orange

Made for daily casual wear, with high neck accent wearing cotton linen fabric. Loose fit with a pleat on the center of the front side. Using a thick satin fabric, each piece we made would fall beautifully following one's body.

COLLECTION



THE NETTIES

Nettie Bottom in Kale Green and Tangerine

Orange Made using the comfortable fabric which is soft cotton linen, this piece is made for daily wear. Each piece comes with an attached ribbon for its own accent. This piece was made high-waisted but still loose-fitting for the thighs. Made for casual-daily wear, looking effortlessly stylish in a comfy way

COLLECTION

Cress Top in Daisy White and Olive Green

The formal daily wear, creating femininely bold look for the wearer. Cress top is made using satin lurex fabric. It doesn't stretch much and gives that shiny look just enough. Beside the clean-cut neck, the sleeves have their own details, which is the slit on the inside of each sleeve so it could fall beautifully when worn, and the bias tape on the outer side of each sleeve. Each piece is made to fit just right into one's body. Not too loose, not too tight, *just right*.



COLLECTION



Leona Top in Buttermilk

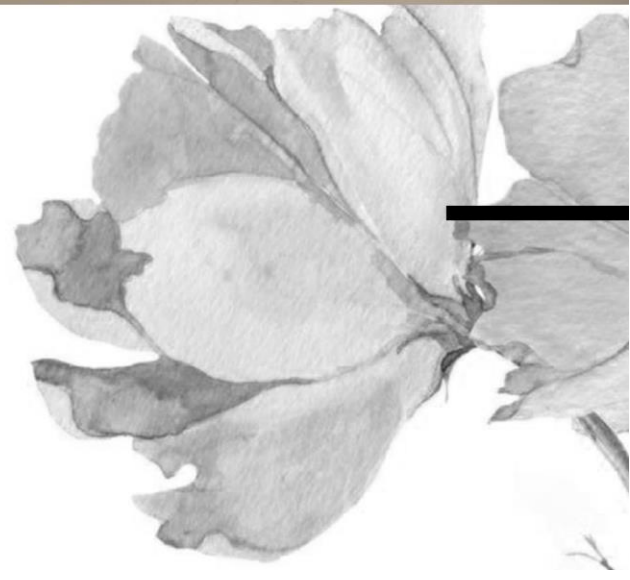
A versatile piece of silk-based top that can be worn alone or as an outer. With attached choker and slitted sleeve for a feminine look. Each piece is loose-fitted. Comes with elastic each side on the waist.

COLLECTION

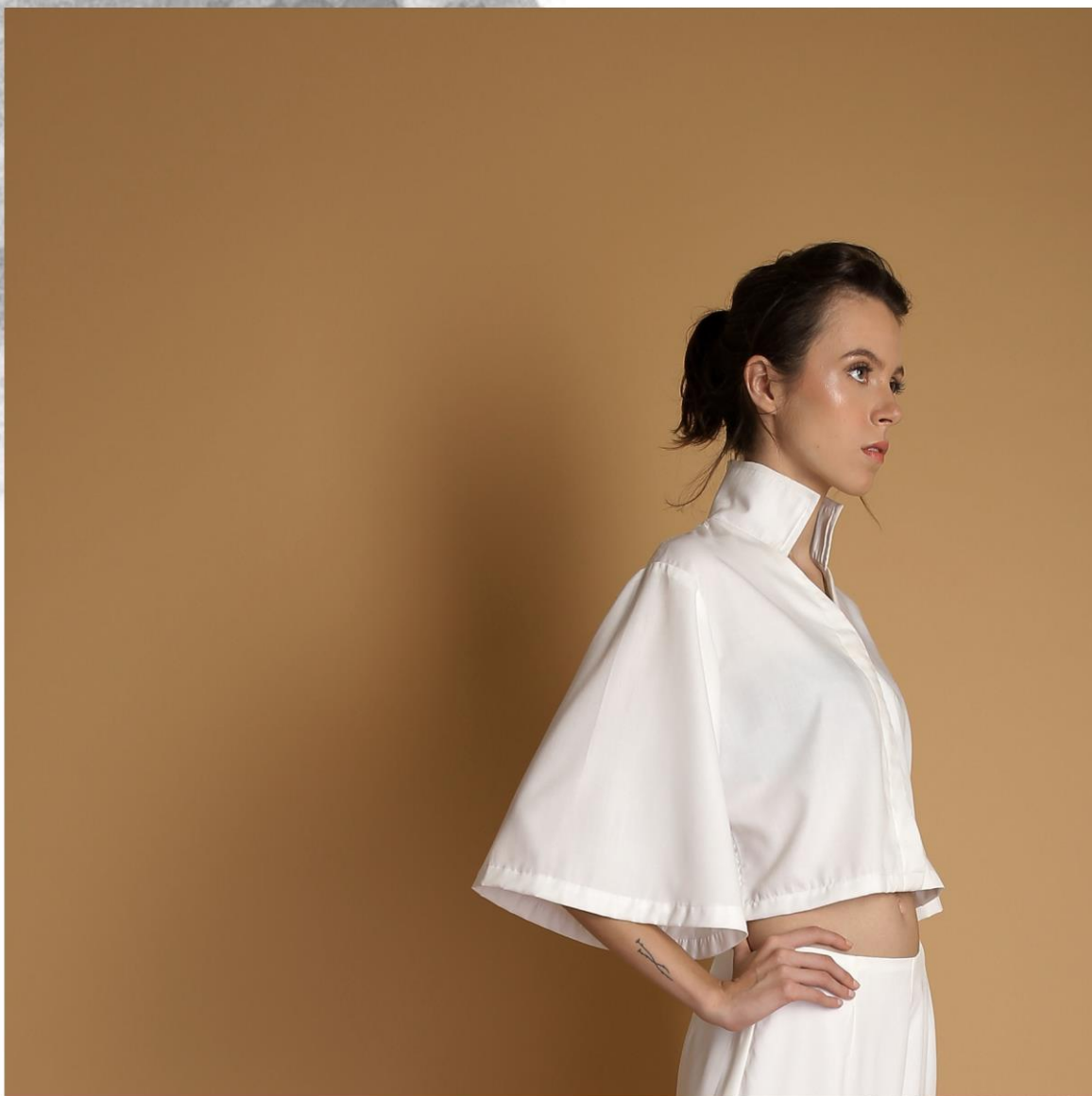


Lilith Dress in Crimson Red

A slip on dress with a open-cut and shorter on the front side, and longer at the back side. Effortlessly classy with a touch of intimacy. Each piece comes with inner lining and an invisible zipper on the side.




COLLECTION



Maisie Blouse in Daisy White

A minimalist cotton-based crop top blouse with wide-cut sleeves on each side and a high-collar neck. Comes with 3 buttons for each piece. Made loose-fitted.



COLLECTION



Blaire Pants in Daisy White

A basic wide, straight cut maxi pants made using thick satin fabric. Comes with inner lining and an invisible zipper on the side. Worn for any occasion. Effortless, minimalist, yet still looking

COLLECTION



THE NORAS

Nora Crop Top in Pearl White

A basic crop top with a little high-neck as an accent for this piece. Made using stretchy silky satin. Very, very soft.



COLLECTION

THE NORAS

Nora Skirt in White on White

A pencil-cut skirt with a see-through fabric on one side. Can be worn for formal wear or daily wear, easy to match with any top. Looking feminine effortlessly.





THANK YOU

FASHION PORTOFOLIO

by

*SHERLYN
CLARICE
ANDIKA*

